



FIELD ASSETS

ADDITIONAL SUPPORT WHEN YOU NEED IT.

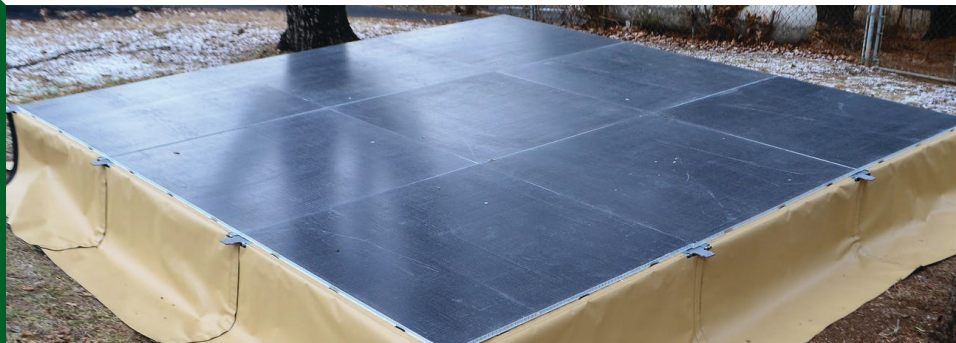
ADJUSTABLE REUSABLE PLATFORM SYSTEM

- 4 X 4 FT MODULES CAN BE ASSEMBLED IN NUMEROUS CONFIGURATIONS; NO TOOLS REQUIRED.
- COMPATIBLE WITH STAIRS AND VESTIBULES.
- AVAILABLE AS A "FRAME ONLY" PURCHASE TO ACCOMMODATE PLYWOOD PANELS (PLYWOOD NOT INCLUDED).
- WEIGHT TOLERANCE OF 65 LB / FT².

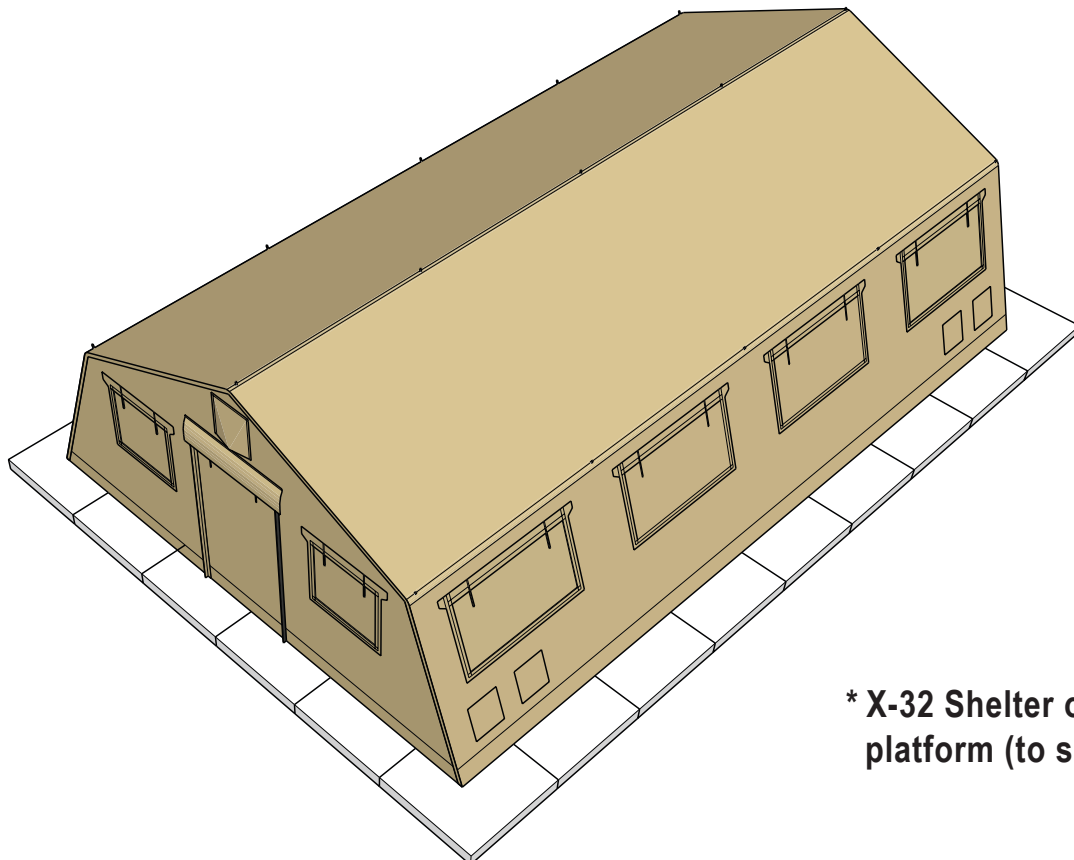
At Deployed Logix we're redefining rapid deployment. Through our extensive work with law enforcement, search and rescue teams, various first responders, private organizations both domestically and abroad, and the military, our team understands that when a crisis calls, seconds count. Discover why we are the leader in American-made, rapidly deployable disaster preparedness products.

Specification and design may be altered without notice due to continuous product development. LAST UPDATED NOVEMBER 2021.

Proudly made in the USA. I CAGE CODE: 7CFK2
DUNS#: 079751064 I SBA 8(a) Certified.



SPECIFICATIONS	
STANDARD PLATFORM DIMENSIONS:	24 x 36 ft (7.32 x 10.97 m)
STANDARD PLATFORM AREA:	864 ft ² (80.27 m ²)
MODULE SIZE:	4 x 4 ft (1.22 x 1.22 m)
MODULE QUANTITY:	54 Modules
MODULE TYPE:	Fire Rated, R3 Insulation Floor Panels
SIDE SKIRT QUANTITY:	4 Skirts
WEIGHT TOLERANCE:	65 lb / ft ² (317.4 kg / m ²)
WIND TOLERANCE:	65+ mph (104.60 kph)
TECHNICAL STANDARD:	ASEM E1925
LEVELING TOLERANCE:	+/- 0.25 in (0.63 cm) on sloped ground
SLOPE OF AN ACCESSIBLE PLATFORM:	Not to exceed 1:50 (2%) in any direction or 1:33 (3%) where needed for proper drainage
PACKAGING:	3 Crates
CRATE #1	Dimensions: 24 x 40 x 28 in (60.96 x 101.60 x 71.12 cm) // Weight: 350 lb (158.8 kg)
CRATE #2	Dimensions: 24 x 50 x 28 in (60.96 x 127 x 71.12 cm) // Weight: 865 lb (392.4 kg)
CRATE #3	Dimensions: 45 x 50 x 55 in (114.30 x 127 x 139.70 cm) // Weight: 1,500 lb (680.4 kg)



*** X-32 Shelter on a 24 x 36 ft platform (to scale)**

