

DEPLOYED LOGIX



SHELTERS

THE FIRST IN THE FIELD



ENGLISH

CATALOG



DEPLOYED LOGIX SHELTERS

THE FIRST ONE UP - EVERY TIME

DLX shelters are built to get you into the field quicker and easier so you can focus on what's important - saving lives.

GROWS WITH YOU

Rapidly go from a single shelter to a full scale base camp or field hospital. Our shelters are modular and grow to fit any need.

INTERCHANGEABLE CONNECTIVITY

All DLX shelters connect to each other to provide maximum flexibility regardless of your setup or mission.

WITHSTANDS THE HARSHTEST CONDITIONS

Enjoy the confidence of knowing our shelters go wherever you're needed most.

PROUDLY MADE IN THE USA

8(a) Certified through the Small Business Administration (SBA)
CAGE CODE: 7CFK2 // DUNS #: 079751064
Berry Amendment Compliant available upon request.



DEPLOY FASTER

When a crisis calls, seconds count. That's why Deployed Logix specializes in American-made, rapid deployment shelters and disaster preparedness products for use in field hospitals, base camps, disaster response, and more.

We have worked extensively with first responders, military, search and rescue teams, healthcare professionals, and private organizations both domestically and abroad, so we understand the demanding and ever-evolving nature of deployment. We make it our mission to get you into the field faster and easier so that you can focus on what really counts – your team and your mission.



ASAP® SHELTERS

- The first one up – every time
- Two-person, 60-second setup
- Lightweight durability
- For base camps, field hospitals, disaster relief, and more



X-SERIES SHELTERS

- Infinitely expandable
- You're not connecting, you're growing
- Weather-proof system
- Small footprint, large square footage
- Link up easily with the ASAP®



ASAP-HUB® // X-HUB

- Interchangeable connectivity
- The center of your shelter complex
- Withstands the harshest conditions
- Can stand on its own
- For base camps, field hospitals, disaster relief, and more

AS ADAPTABLE AS YOU ARE



ASAP® ISOLATION UNIT

The ASAP-18 quickly and easily transforms into a true medical isolation unit. The unit is capable of both positive and negative pressure, as well as air scrubbing. The Isolation Unit kit is available for purchase with the shelter or as a later upgrade.



TWO-LANE DECON HAZMAT SHOWER

Extend the functionality of your ASAP® Shelter with the Advanced Two-Lane Decon Hazmat Shower. It can be purchased as a kit or as an add-on to the ASAP® Shelter. With quick-connecting overhead and handheld sprayers, we're keeping the "rapid" in "rapid deployment."



X-SERIES DRIVE-THRU

We developed the DLX Drive-Thru shelter solution to meet the rising needs of healthcare organizations combating the COVID-19 pandemic. This setup deploys quickly as a stand-alone system or as part of a larger shelter complex. The DLX Drive-Thru allows convenient testing and vaccination while patients remain in their car, while providing cover for your staff.



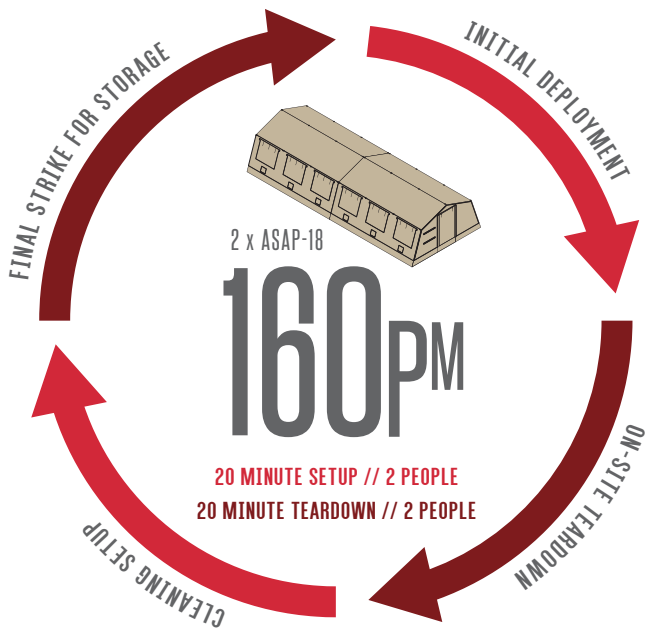
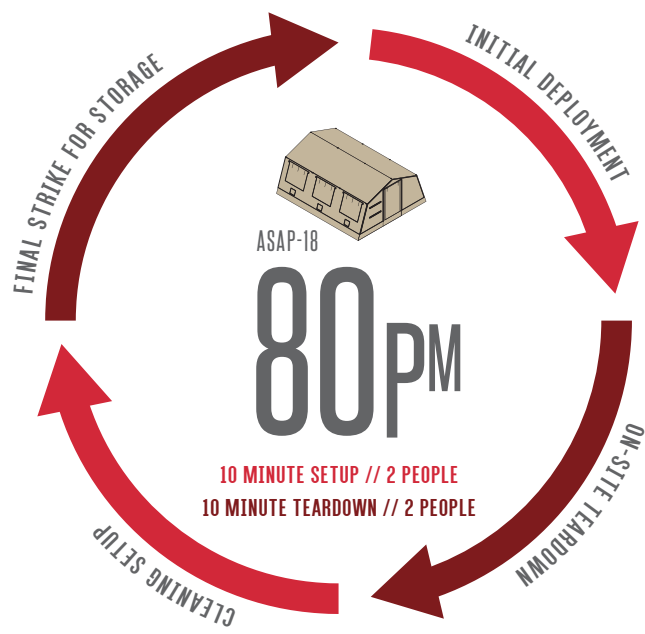
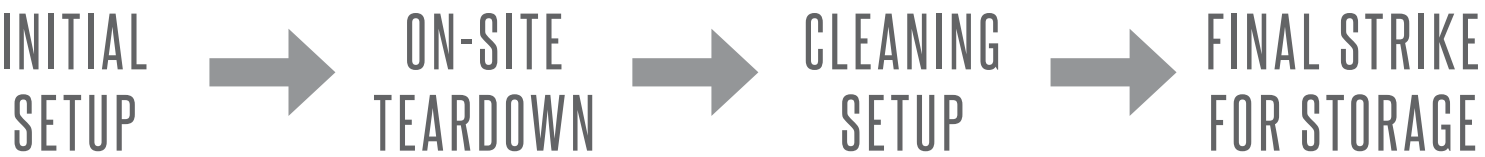
MISSION READY PACKAGE (MRP)

All of the necessary components to deploy a fully outfitted shelter in a single custom hard case leaving a power source as your only need (yes, we have that too!). The ASAP-MRP® is a turnkey solution that allows teams to deploy with confidence, knowing all parts are in a single case.



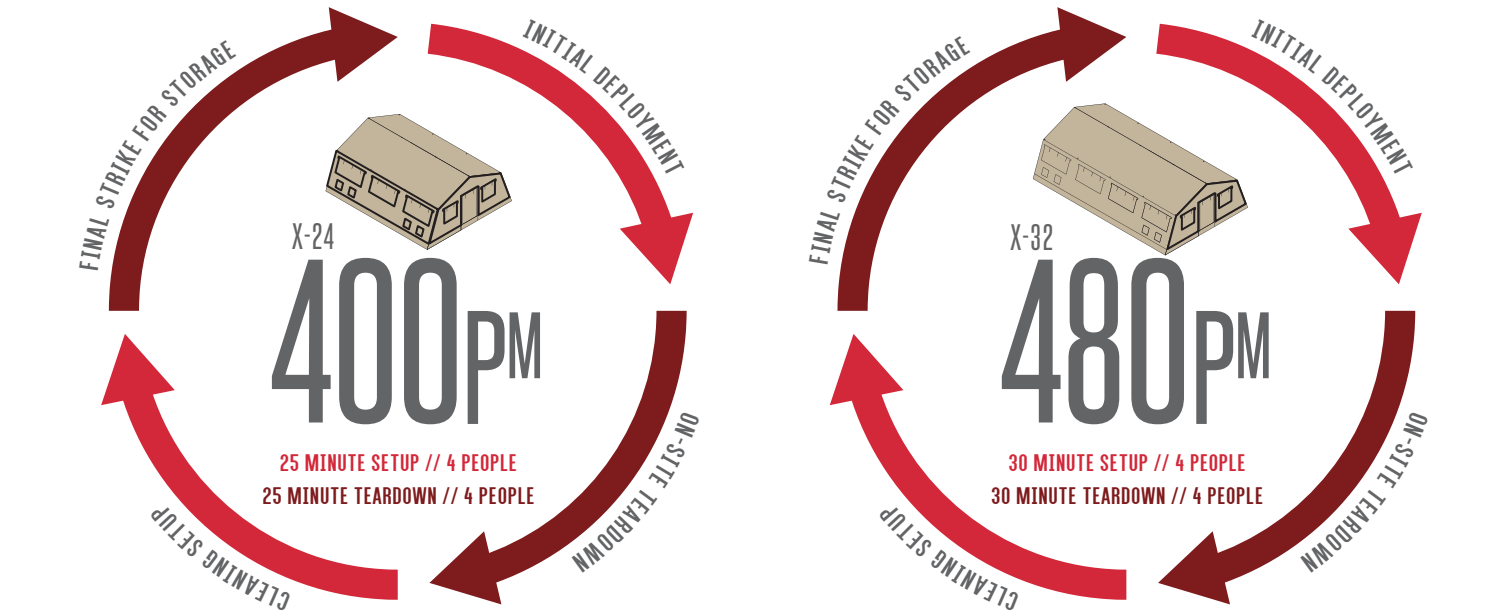
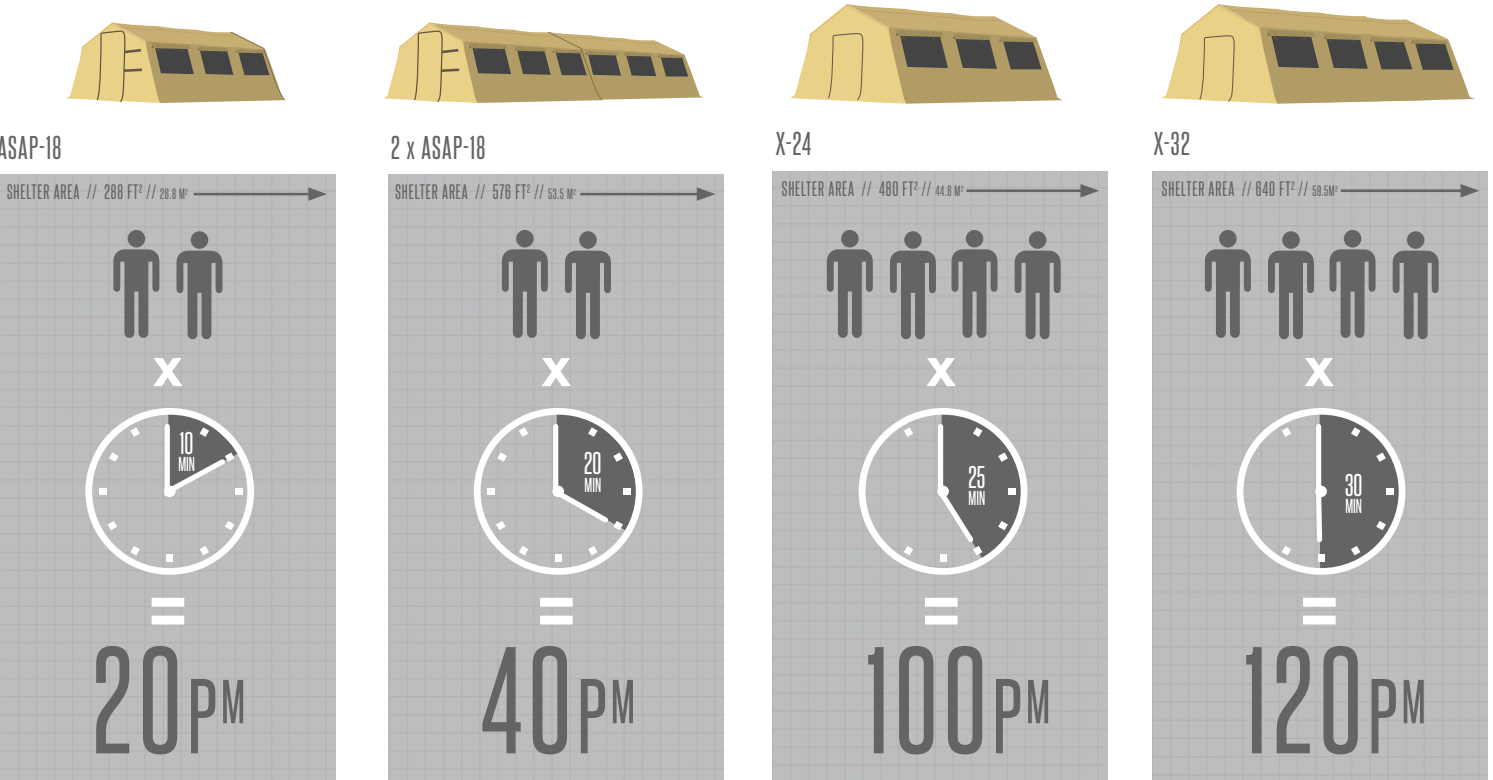
DEPLOYMENT EXPERIENCE

Once dedicated personnel minutes are taken into consideration, the full scope of a shelter's operating cost comes into view. Every shelter must be set up and taken down twice in a full usage cycle: once for your actual deployment and once to be cleaned before long-term storage.



The value of working time in the field can be measured in **PERSONNEL MINUTES (P^M)**. This is the number of minutes allocated personnel spend on a dedicated task, prohibiting them from performing other duties.

PERSONNEL MINUTES (P^M) # OF DEDICATED PERSONNEL x MINUTES FOR TASK



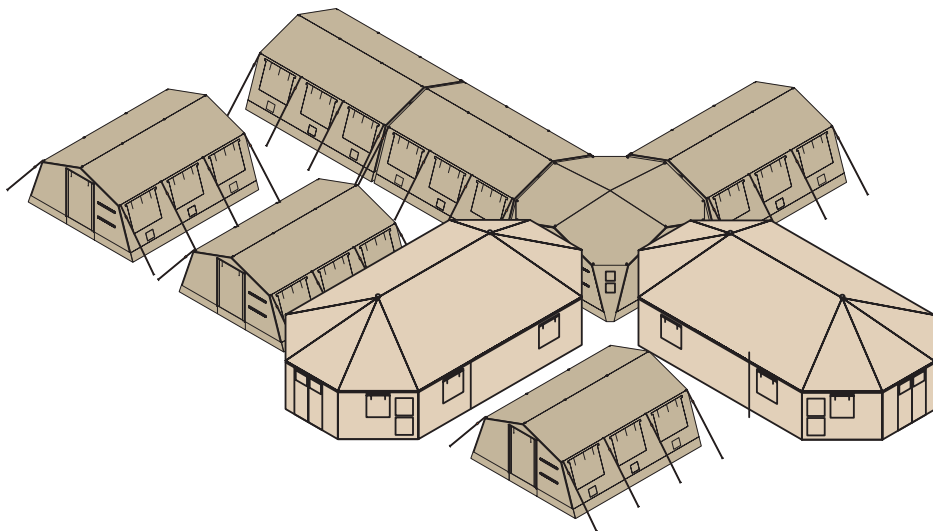


IT ALL FITS TOGETHER

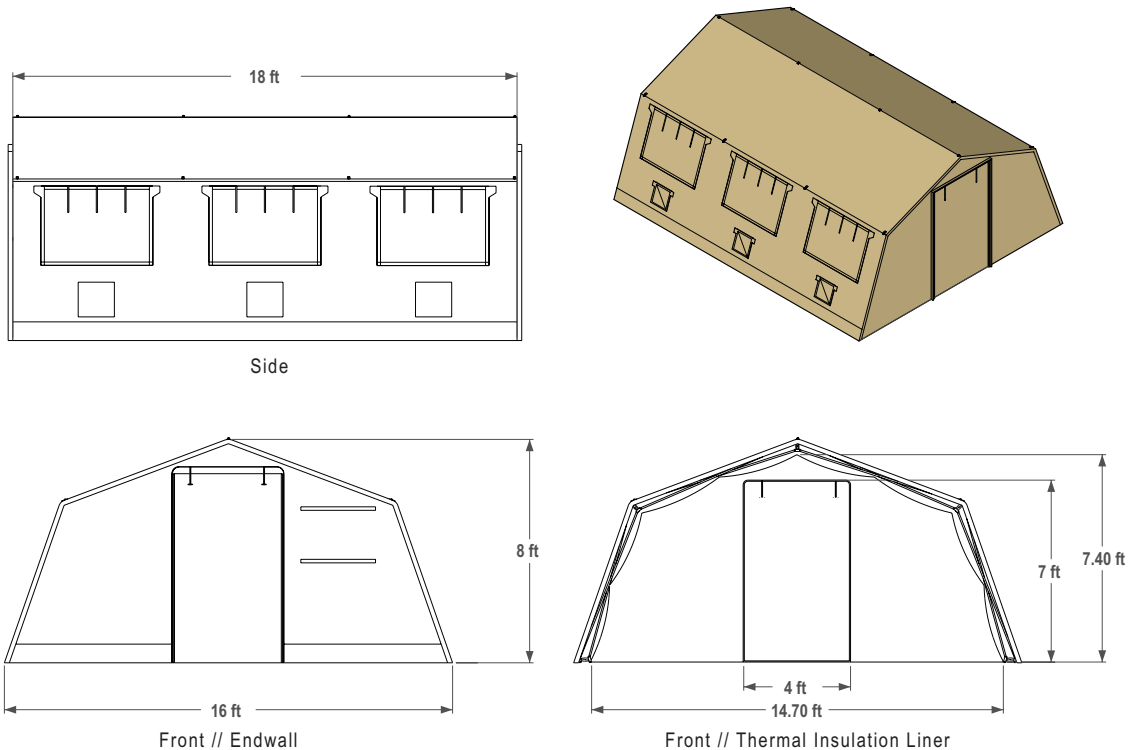
DLX shelters are engineered from the ground up to fit any role thrown at them. Every shelter uses the same simple, uniform connection process. This flexibility allows for an infinite combination of DLX shelter models. An entire base camp or field hospital can be set up in the time it would take to erect a single traditional shelter.

INTEROPERABILITY AND DECONFLICTION

We understand that some deployments call for a single shelter while others call for a full base camp. We're in the solutions business, so we've designed our shelters to be compatible with older DLX models and also with different shelter brands you may already have. Rapid convenience is always our promise to you.



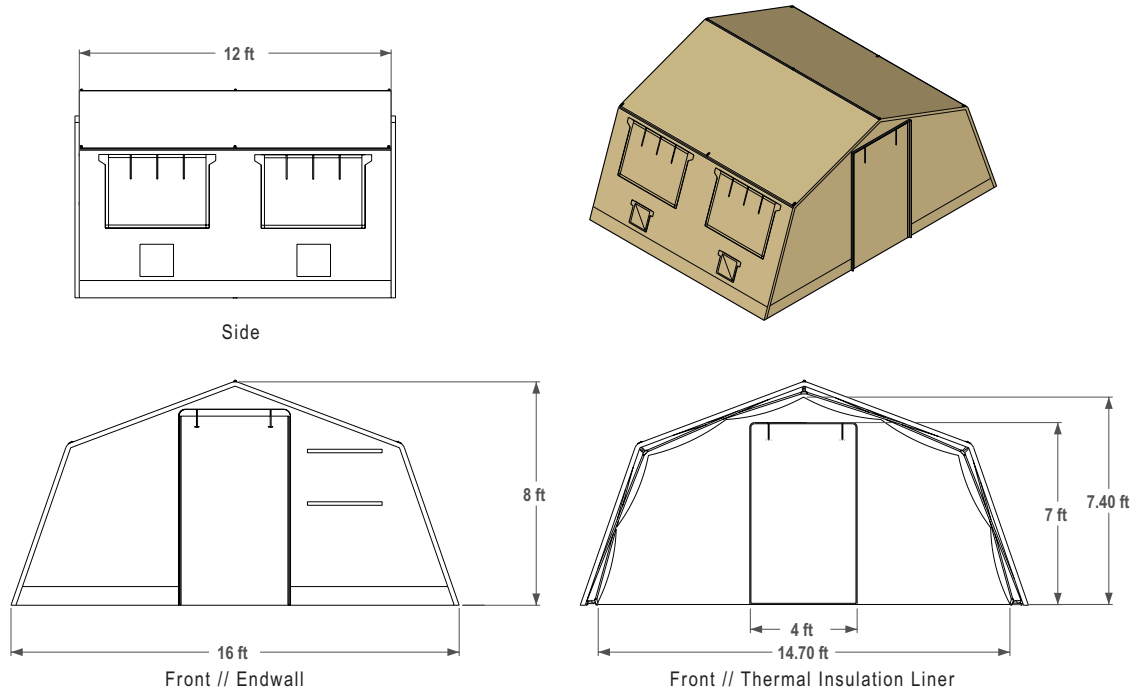
SPECIFICATIONS / ASAP-18



SPECIFICATIONS

OVERALL DIMENSIONS (LENGTH, WIDTH, HEIGHT):	18 x 16 x 8 ft (5.49 x 4.88 x 2.44 m)
MAXIMUM DIMENSIONS NEEDED FOR DEPLOYMENT:	18 x 22 x 8.50 ft (5.49 x 6.71 x 2.59 m)
USABLE AREA:	288 ft ² (26.76 m ²)
INTERNAL VOLUME:	1,690 ft ³ (47.86 m ³)
W/ INSULATION:	1,550 ft ³ (43.89 m ³)
WIND RATING:	55 mph / gusts 65 mph (89 kmh / gusts 105 kmh)
SNOW LOAD:	5 lb / ft ² (24.41 kg / m ²)
SHELTER WEIGHTS:	
SA18	219 lb (99.3 kg)
SCA18	326 lb (147.9 kg)
SMRP18	407 lb (184.6 kg)
PACKED DIMENSIONS:	
The Best Case by DLX™	(1) 76 x 25 x 24 in (191 x 64 x 62 cm)
Shelter (Wrapped)	(1) 72 x 22 x 18 in (183 x 64 x 61 cm)
SHELTER COMPONENTS:	
Windows	(6) 48 x 38 in (121.92 x 96.52 cm) Hook & loop closure, roll up tie-offs, and vector mesh screen
Ecu Duct Ports	(6) 14 in (35.56 cm) Diameter with elastic sock
Doorways	(2) 48 x 84 in (121.92 x 213.36 cm) Double zippered closure with double-sided hook & loop connection boot
Wind Line Tie Off Points	(8) HI-VIZ orange with steel D-ring

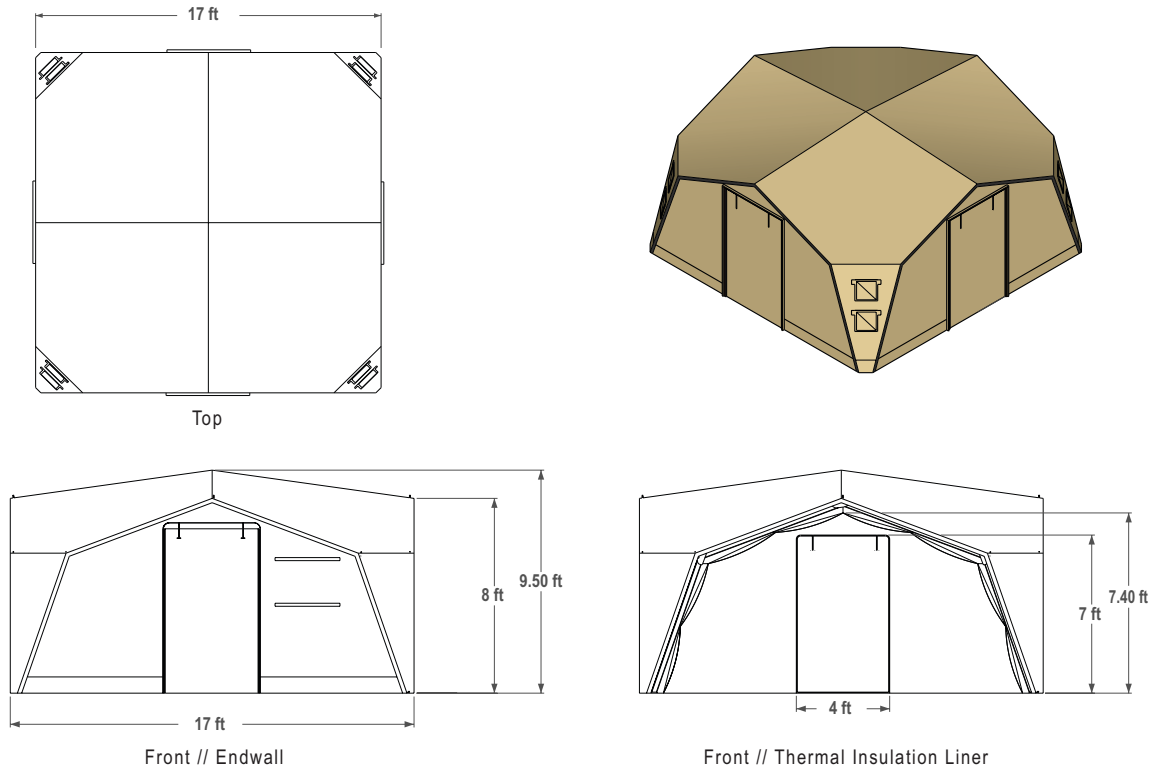
SPECIFICATIONS / ASAP-12



SPECIFICATIONS

OVERALL DIMENSIONS (LENGTH, WIDTH, HEIGHT):	12 x 16 x 8 ft (3.66 x 4.88 x 2.44 m)
MAXIMUM DIMENSIONS NEEDED FOR DEPLOYMENT:	12 x 22 x 8.50 ft (3.66 x 6.71 x 2.59 m)
USABLE AREA:	192 ft ² (17.84 m ²)
INTERNAL VOLUME:	1,125 ft ³ (47.86 m ³)
W/ INSULATION:	1,030 ft ³ (29.17 m ³)
WIND RATING:	55 mph / gusts 65 mph (89 kmh / gusts 105 kmh)
SNOW LOAD:	5 lb / ft ² (24.41 kg / m ²)
SHELTER WEIGHTS:	
SA12	160 lb (72.6 kg)
SCA12	281 lb (127.5 kg)
SMRP12	354 lb (160.6 kg)
PACKED DIMENSIONS:	
The Best Case by DLX™	(1) 76 x 25 x 24 in (191 x 64 x 62 cm)
Shelter (Wrapped)	(1) 72 x 22 x 18 in (183 x 64 x 61 cm)
SHELTER COMPONENTS:	
Windows	(4) 48 x 38 in (121.92 x 96.52 cm) Hook & loop closure, roll up tie-offs, and vector mesh screen
ECU Duct Ports	(4) 14 in (35.56 cm) Diameter with elastic sock
Doorways	(2) 48 x 84 in (121.92 x 213.36 cm) Double zippered closure with double-sided hook & loop connection boot
Wind Line Tie Off Points	(6) HI-VIZ orange with steel D-ring

SPECIFICATIONS / ASAP- HUB®

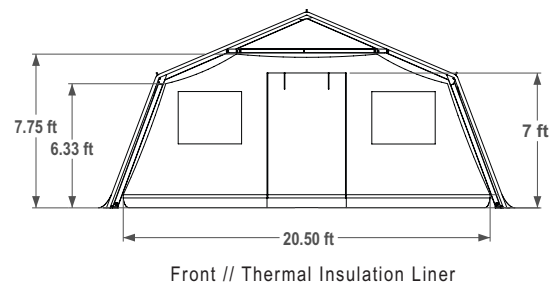
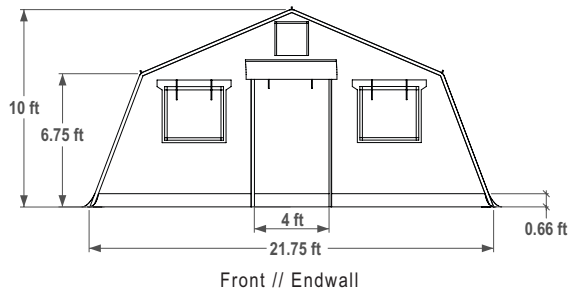
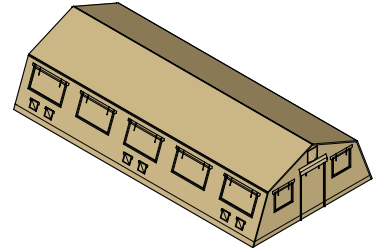
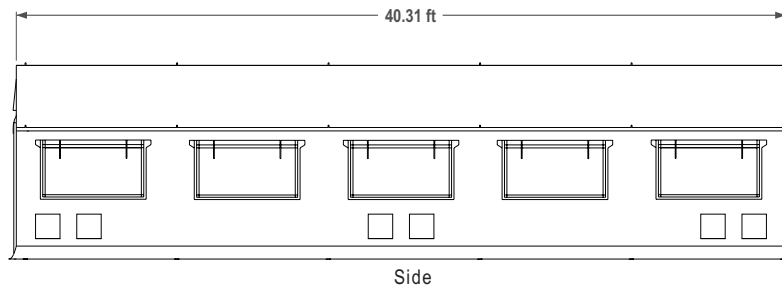


SPECIFICATIONS

OVERALL DIMENSIONS (LENGTH, WIDTH, HEIGHT):	17 x 17 x 9.5 ft (5.18 x 5.18 x 2.90 m)
USABLE AREA:	289 ft ² (26.85 m ²)
INTERNAL VOLUME:	1,985 ft ³ (56.21 m ³)
W/ INSULATION:	1,775 ft ³ (50.26 m ³)
WIND RATING:	55 mph / gusts 65 mph (89 kmh / gusts 105 kmh)
SNOW LOAD:	5 lb / ft ² (24.41 kg / m ²)
SHELTER WEIGHTS:	
SAHUB	305 lb (158.8 kg)
SCAHUB	470 lb (242.7 kg)
SMRPHUB	520 lb (235.9 kg)
PACKED DIMENSIONS:	
The Best Case by DLX™	(1) 101 x 25 x 24 in (213 x 64 x 62 cm)
SHELTER COMPONENTS:	
ECU Duct Ports	(8) 14 in (35.56 cm) Diameter with elastic sock
Doorways	(4) 48 x 84 in (121.92 x 213.36 cm) Double zippered closure with double-sided hook & loop connection boot
Wind Line Tie Off Points	(8) Frame hardpoint connections with seatbelt strap

SPECIFICATIONS

X-SERIES // X-40

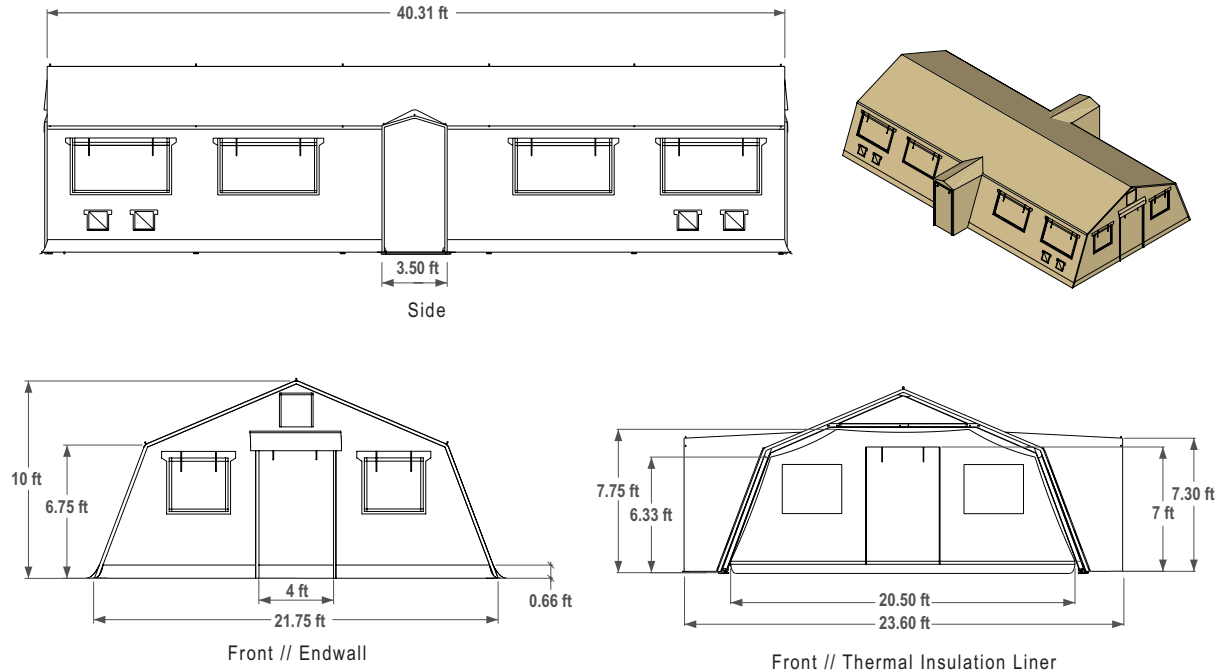


SPECIFICATIONS

OVERALL DIMENSIONS (LENGTH, WIDTH, HEIGHT):	40.31 x 21.75 x 10 ft (12.29 x 6.63 x 3.05 m)
USABLE AREA:	820 ft ² (76.18 m ²)
INTERNAL VOLUME:	5,700 ft ³ (161.40 m ³)
W/ INSULATION:	5,070 ft ³ (143.57 m ³)
WIND RATING:	Sustained winds of 65 mph / gusts 75 mph (104 kmh / gusts 120 kmh)
SNOW LOAD:	10 lb / ft ² (48.82 kg / m ²)
RAIN LOAD:	2 in / hr (50.80 mm / hr)
SHELTER WEIGHTS:	
SX40	1,073 lb (486 kg)
SXRPX40	1,573 lb (713.5 kg)
PACKED DIMENSIONS:	
The Best Case by DLX™	(2) 101 x 25 x 24 in (257 x 64 x 62 cm)
SHELTER COMPONENTS:	
Windows	(10) 72 x 38 in (121.92 x 96.52 cm) Hook & loop closure, roll up tie-offs, and vector mesh screen (4) 38 x 38 in (96.52 x 96.52 cm) Hook & loop closure, roll up tie-offs, and vector mesh screen
ECU Duct Ports	(12) 14 in (35.56 cm) Diameter with elastic sock
Doorways	(2) 48 x 84 in (121.92 x 213.36 cm) Double zippered closure with double-sided hook & loop connection boot
Wind Line Tie Off Points	(16) Frame hardpoint connections with seatbelt strap
Insulation Air Gap Vent	(1) Per endwall with hook & loop closure

SPECIFICATIONS

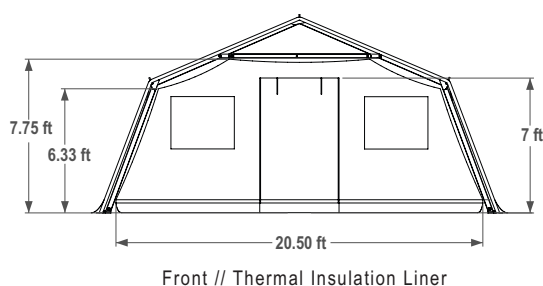
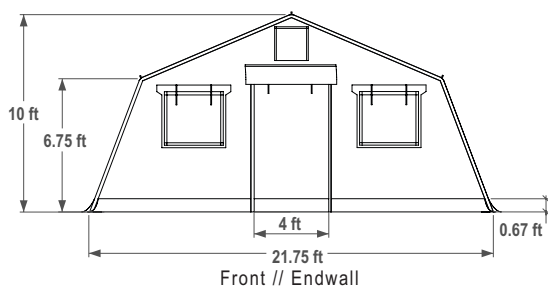
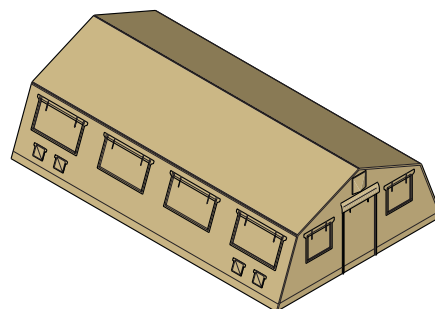
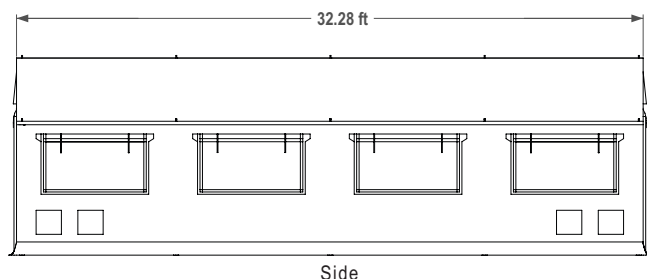
X-SERIES // X-40 SC



SPECIFICATIONS

OVERALL DIMENSIONS (LENGTH, WIDTH, HEIGHT):	40.31 x 23.60 x 10 ft (12.2 x 7.19 x 3.05 m)
USABLE AREA:	894.24 ft ² (83.08 m ²)
INTERNAL VOLUME:	5,700 ft ³ (161.40 m ³)
W/ INSULATION:	5,244 ft ³ (148.49 m ³)
WIND RATING:	Sustained winds of 65 mph / gusts 75 mph (104 kmh / gusts 120 kmh)
SNOW LOAD:	10 lb / ft ² (48.82 kg / m ²)
RAIN LOAD:	2 in / hr (50.80 mm / hr)
SHELTER WEIGHTS:	
SX40SC	1,149 lb (520 kg)
SXRPX40SC	1,649 lb (746 kg)
PACKED DIMENSIONS:	
The Best Case by DLX™	(3) 101 x 25 x 24 in (257 x 64 x 62 cm)
SHELTER COMPONENTS:	
Windows	(8) 72 x 38 in (121.92 x 96.52 cm) Hook & loop closure, roll up tie-offs, and vector mesh screen (4) 38 x 38 in (96.52 x 96.52 cm) Hook & loop closure, roll up tie-offs, and vector mesh screen
ECU Duct Ports	(8) 14 in (35.56 cm) Diameter with elastic sock
Doorways	(2) 48 x 84 in (121.92 x 213.36 cm) Double zippered closure with double-sided hook & loop connection boot (2) 37 x 80 in (93.98 x 203.20 cm) Double zippered closure with double-sided hook & loop connection boot
Wind Line Tie Off Points	(20) Frame hardpoint connections with seatbelt strap
Insulation Air Gap Vent	(1) Per endwall with hook & loop closure

SPECIFICATIONS // X-SERIES // X-32

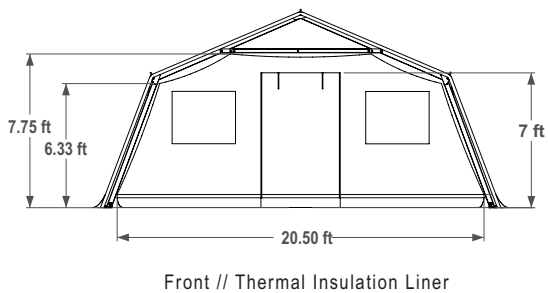
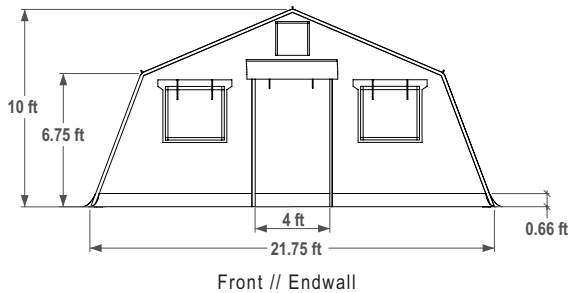
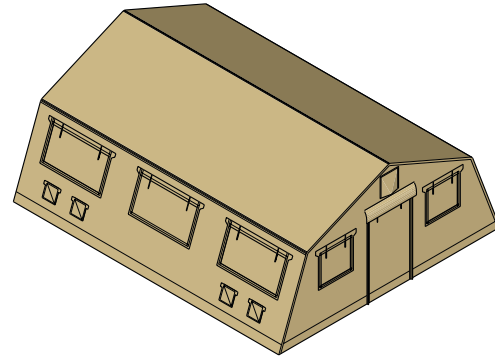
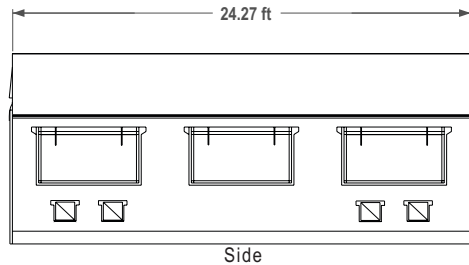


SPECIFICATIONS

OVERALL DIMENSIONS (LENGTH, WIDTH, HEIGHT):	32.28 x 21.75 x 10 ft (9.76 x 6.63 x 3.05 m)
USABLE AREA:	702.09 ft ² (65.23 m ²)
INTERNAL VOLUME:	4,560 ft ³ (129.12 m ³)
W/ INSULATION:	4,060 ft ³ (114.97 m ³)
WIND RATING:	Sustained winds of 65 mph / gusts 75 mph (104 kmh / gusts 120 kmh)
SNOW LOAD:	10 lb / ft ² (48.82 kg / m ²)
RAIN LOAD:	2 in / hr (50.80 mm / hr)
SHELTER WEIGHTS:	
SX32	895 lb (405 kg)
SXRPX32	1,250 lb (566 kg)
PACKED DIMENSIONS:	
The Best Case by DLX™	(2) 101 x 25 x 24 in (257 x 64 x 62 cm)
SHELTER COMPONENTS:	
Windows	(8) 72 x 38 in (121.92 x 96.52 cm) Hook & loop closure, roll up tie-offs, and vector mesh screen (4) 38 x 38 in (96.52 x 96.52 cm) Hook & loop closure, roll up tie-offs, and vector mesh screen
ECU Duct Ports	(8) 14 in (35.56 cm) Diameter with elastic sock
Doorways	(2) 48 x 84 in (121.92 x 213.36 cm) Double zippered closure with double-sided hook & loop connection boot
Wind Line Tie Off Points	(14) Frame hardpoint connections with seatbelt strap
Insulation Air Gap Vent	(1) Per endwall with hook & loop closure

SPECIFICATIONS

X-SERIES // X-24

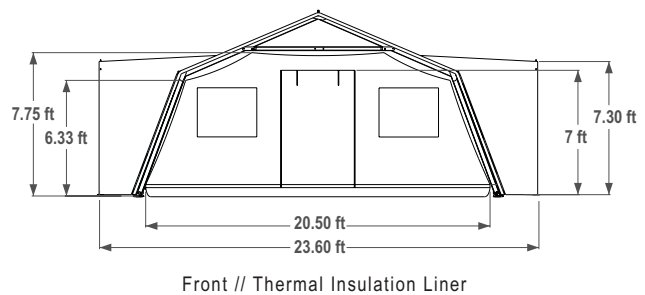
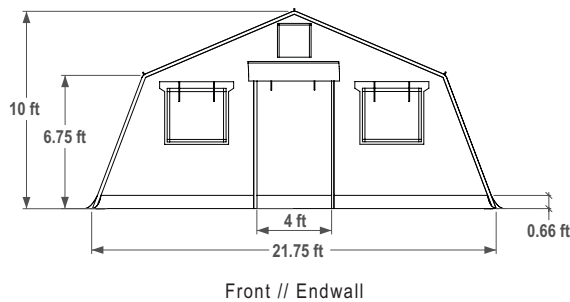
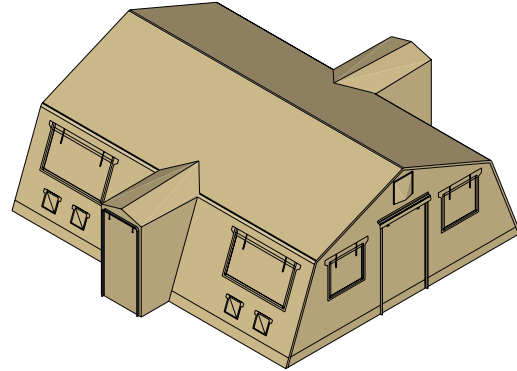
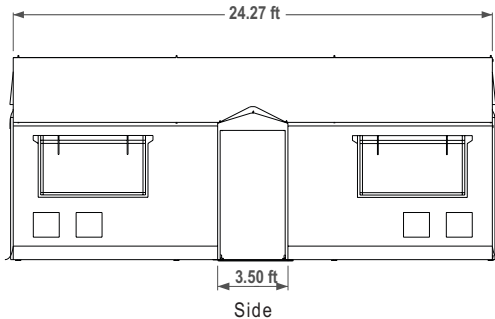


SPECIFICATIONS

OVERALL DIMENSIONS (LENGTH, WIDTH, HEIGHT):	24.27 x 21.75 x 10 ft (7.40 x 6.63 x 3.05 m)
USABLE AREA:	527.87 ft ² (49.04 m ²)
INTERNAL VOLUME:	3,420 ft ³ (96.84 m ³)
W/ INSULATION:	3,040 ft ³ (86.08 m ³)
WIND RATING:	Sustained winds of 65 mph / gusts 75 mph (104 kmh / gusts 120 kmh)
SNOW LOAD:	10 lb / ft ² (48.82 kg / m ²)
RAIN LOAD:	2 in / hr (50.80 mm / hr)
SHELTER WEIGHTS:	
SX24	750 lb (340 kg)
SXRPX24	1,080 lb (489 kg)
PACKED DIMENSIONS:	
The Best Case by DLX™	(2) 101 x 25 x 24 in (257 x 64 x 62 cm)
SHELTER COMPONENTS:	
Windows	(6) 72 x 38 in (121.92 x 96.52 cm) Hook & loop closure, roll up tie-offs, and vector mesh screen (4) 38 x 38 in (96.52 x 96.52 cm) Hook & loop closure, roll up tie-offs, and vector mesh screen
ECU Duct Ports	(8) 14 in (35.56 cm) Diameter with elastic sock
Doorways	(2) 48 x 84 in (121.92 x 213.36 cm) Double zippered closure with double-sided hook & loop connection boot
Wind Line Tie Off Points	(12) Frame hardpoint connections with seatbelt strap
Insulation Air Gap Vent	(1) Per endwall with hook & loop closure

SPECIFICATIONS

X-SERIES // X-24 SC

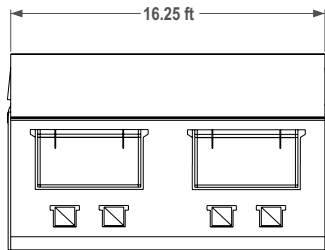


SPECIFICATIONS

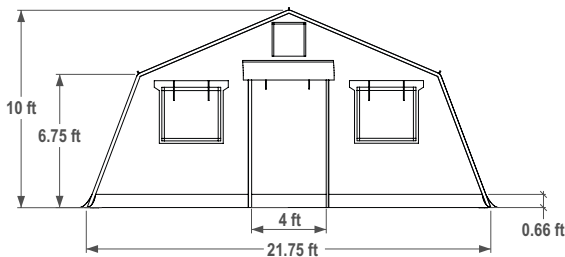
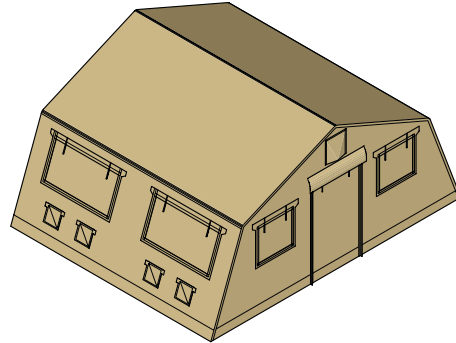
OVERALL DIMENSIONS (LENGTH, WIDTH, HEIGHT):	24.27 x 23.60 x 10 ft (7.40 x 7.19 x 3.20 m)
USABLE AREA:	545.37 ft ² (50.67 m ²)
INTERNAL VOLUME:	3,795 ft ³ (107.50 m ³)
W/ INSULATION:	3,274 ft ³ (92.70 m ³)
WIND RATING:	Sustained winds of 65 mph / gusts 75 mph (104 kmh / gusts 120 kmh)
SNOW LOAD:	10 lb / ft ² (48.82 kg / m ²)
RAIN LOAD:	2 in / hr (50.80 mm / hr)
SHELTER WEIGHTS:	
SX40SC	840 lb (380 kg)
SXRPX40SC	1,170 lb (530.7 kg)
PACKED DIMENSIONS:	
The Best Case by DLX™	(2) 101 x 25 x 24 in (257 x 64 x 62 cm)
SHELTER COMPONENTS:	
Windows	(4) 72 x 38 in (121.92 x 96.52 cm) Hook & loop closure, roll up tie-offs, and vector mesh screen (4) 38 x 38 in (96.52 x 96.52 cm) Hook & loop closure, roll up tie-offs, and vector mesh screen
ECU Duct Ports	(8) 14 in (35.56 cm) Diameter with elastic sock
Doorways	(2) 48 x 84 in (121.92 x 213.36 cm) Double zippered closure with double-sided hook & loop connection boot (2) 37 x 80 in (93.98 x 203.20 cm) Double zippered closure with double-sided hook & loop connection boot
Wind Line Tie Off Points	(16) Frame hardpoint connections with seatbelt strap
Insulation Air Gap Vent	(1) Per endwall with hook & loop closure

SPECIFICATIONS

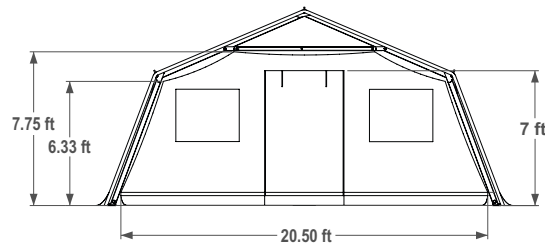
X-SERIES // X-16



Side



Front // Endwall



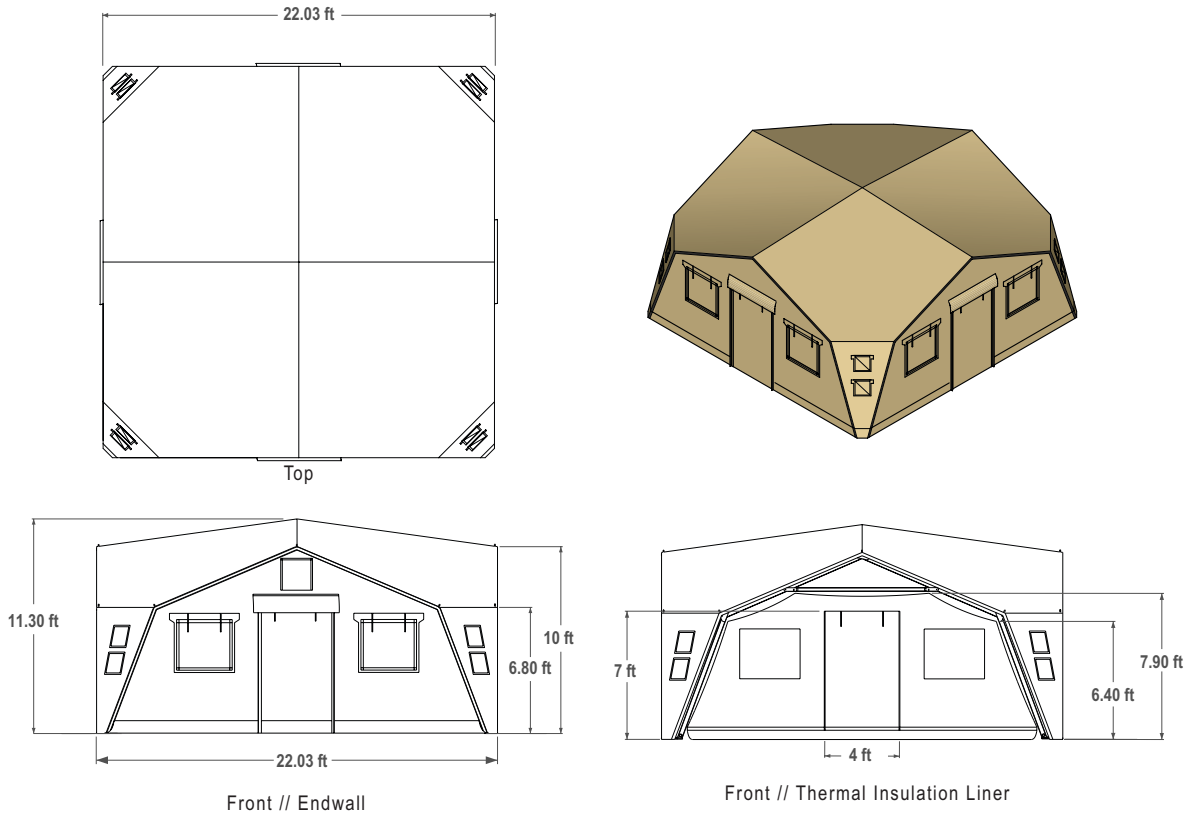
Front // Thermal Insulation Liner

SPECIFICATIONS

OVERALL DIMENSIONS (LENGTH, WIDTH, HEIGHT):	16.25 x 21.75 x 10 ft (4.95 x 6.63 x 3.05 m)
USABLE AREA:	353.44 ft ² (32.84 m ²)
INTERNAL VOLUME:	2,280 ft ³ (64.56 m ³)
W/ INSULATION:	2,025 ft ³ (57.34 m ³)
WIND RATING:	Sustained winds of 65 mph / gusts 75 mph (104 kmh / gusts 120 kmh)
SNOW LOAD:	10 lb / ft ² (48.82 kg / m ²)
RAIN LOAD:	2 in / hr (50.80 mm / hr)
SHELTER WEIGHTS:	
SX16	485 lb (219.5 kg)
SXRPX16	660 lb (299.4 kg)
PACKED DIMENSIONS:	
The Best Case by DLX™	(2) 101 x 25 x 24 in (257 x 64 x 62 cm)
SHELTER COMPONENTS:	
Windows	(4) 72 x 38 in (121.92 x 96.52 cm) Hook & loop closure, roll up tie-offs, and vector mesh screen (4) 38 x 38 in (96.52 x 96.52 cm) Hook & loop closure, roll up tie-offs, and vector mesh screen
ECU Duct Ports	(8) 14 in (35.56 cm) Diameter with elastic sock
Doorways	(2) 48 x 84 in (121.92 x 213.36 cm) Double zippered closure with double-sided hook & loop connection boot
Wind Line Tie Off Points	(10) Frame hardpoint connections with seatbelt strap
Insulation Air Gap Vent	(1) Per endwall with hook & loop closure

SPECIFICATIONS

X-SERIES // X-HUB



SPECIFICATIONS

OVERALL DIMENSIONS (LENGTH, WIDTH, HEIGHT):	22.03 x 22.03 x 11.30 ft (6.71 x 6.71 x 3.44 m)
USABLE AREA:	473 ft ² (43.94 m ²)
INTERNAL VOLUME:	3,795 ft ³ (107.46 m ³)
W/ INSULATION:	3,100 ft ³ (87.78 m ³)
WIND RATING:	Sustained winds of 65 mph / gusts 75 mph (104 kmh / gusts 120 kmh)
SNOW LOAD:	10 lb / ft ² (48.82 kg / m ²)
RAIN LOAD:	2 in / hr (50.80 mm / hr)
SHELTER WEIGHTS:	
SXHUB	743 lb (337 kg)
SXRPXHUB	1,053 lb (477 kg)
PACKED DIMENSIONS:	
The Best Case by DLX™	(2) 101 x 25 x 24 ft (257 x 64 x 62 cm)
SHELTER COMPONENTS:	
Windows, 2 per Endwall	(8) 38 x 38 in (96.52 x 96.52 cm) Hook & loop closure, roll up tie-offs, and vector mesh screen
ECU Duct Ports	(8) 14 in (35.56 cm) Diameter with elastic sock
Doorways	(4) 48 x 84 in (121.92 x 213.36 cm) Double zippered closure with double-sided hook & loop connection boot
Wind Line Tie Off Points	(8) Frame hardpoint connections with seatbelt strap
Insulation Air Gap Vent	(1) Per endwall with hook & loop closure

TAKE IT UP A NOTCH



BUMP DOOR

Ideal for field hospitals and shelter-to-shelter connection.



RIGID DOOR

Compatible with all DLX shelter systems.



DIVIDER CURTAINS

Instant privacy for restrooms, patient care, or sleeping quarters.



DLX HARD FLOOR

Heavy-duty modular floor can withstand up to 20,000 lb / ft².



ATLAS® ANCHOR

Provides maximum stability with minimal space and time.



SAFETY KIT

A must-have for all shelter deployments.



ID PANELS

Completely customizable identification for your shelter.



TABLE KIT

Shelter storage and desk: all in one.



SCREEN ENDWALLS

Simple climate control solution for warm environments.

LET US SERVE YOU

THE TEAM BEHIND YOUR TEAM™

HOW CAN WE HELP?

At DLX we are committed to finding solutions to difficult problems. Tell us about your mission and we will use our combined 50+ years of experience to design a system that best meets your needs.



CONTACT US

sales@deployedlogix.com

deployedlogix.com

+1 (541) 357-5978



“THAT IS A WELL-BUILT, WELL-FABRICATED FACILITY MADE BY CRAFTSMEN THAT REPRESENT THE VERY BEST OF THE UNITED STATES. IT MADE ME PROUD, REALLY PROUD.”

- Admiral Craig S. Faller // Commander, SOUTHCOM



